

Beaver Lake Zebra Mussel Q&A

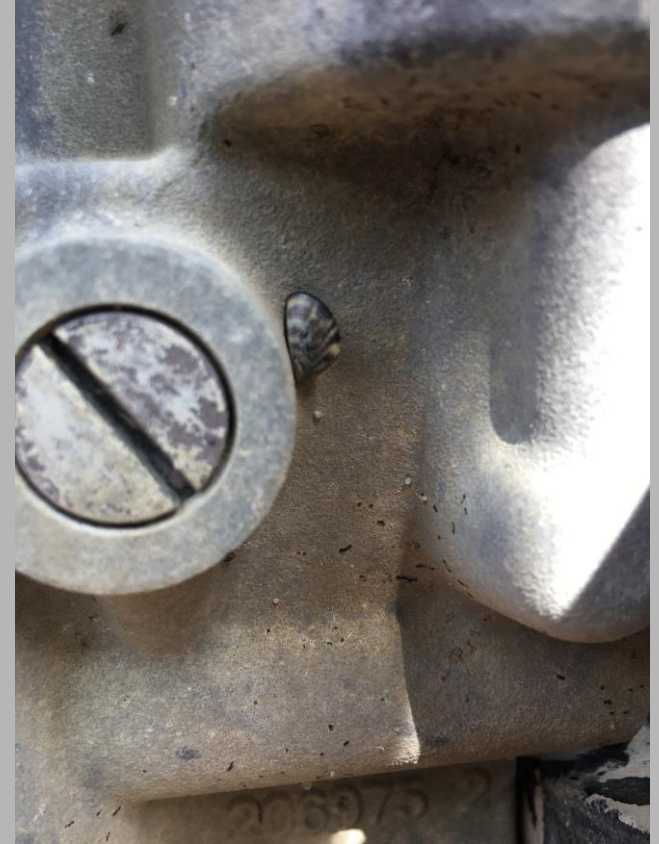
NEBRASKA



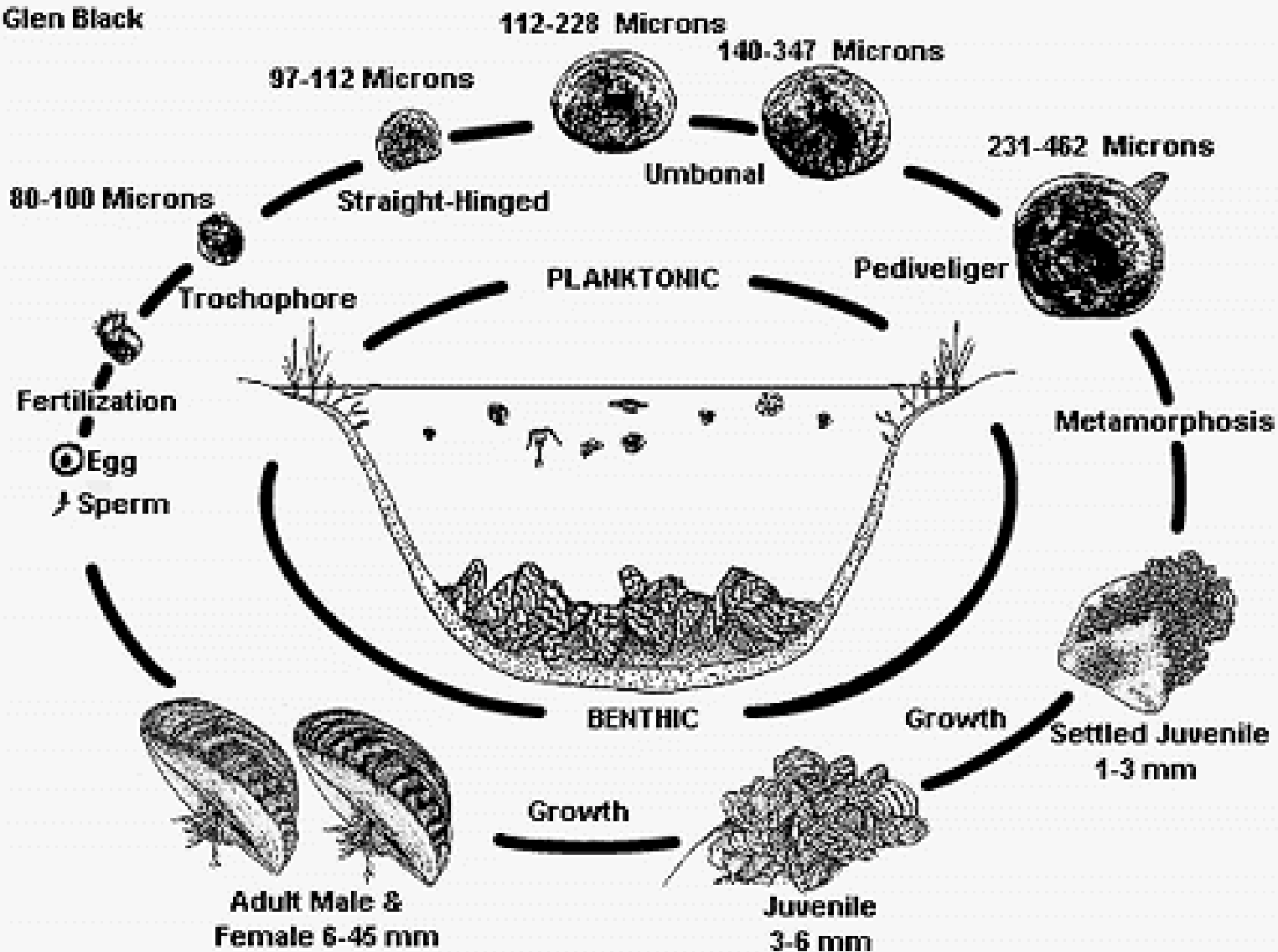
Nebraska Game and Parks Commission
Aquatic Invasive Species Program
July 14, 2023

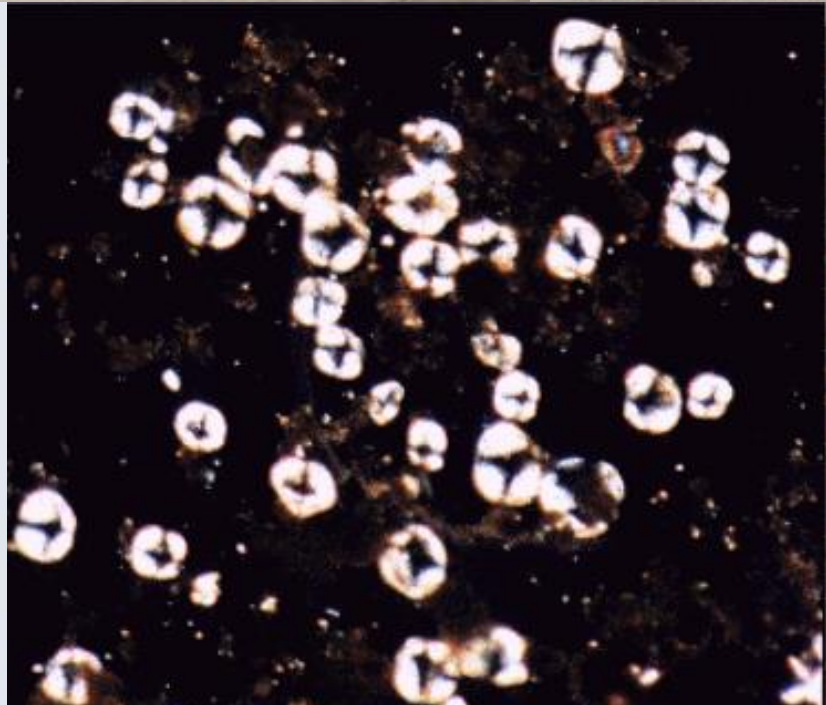
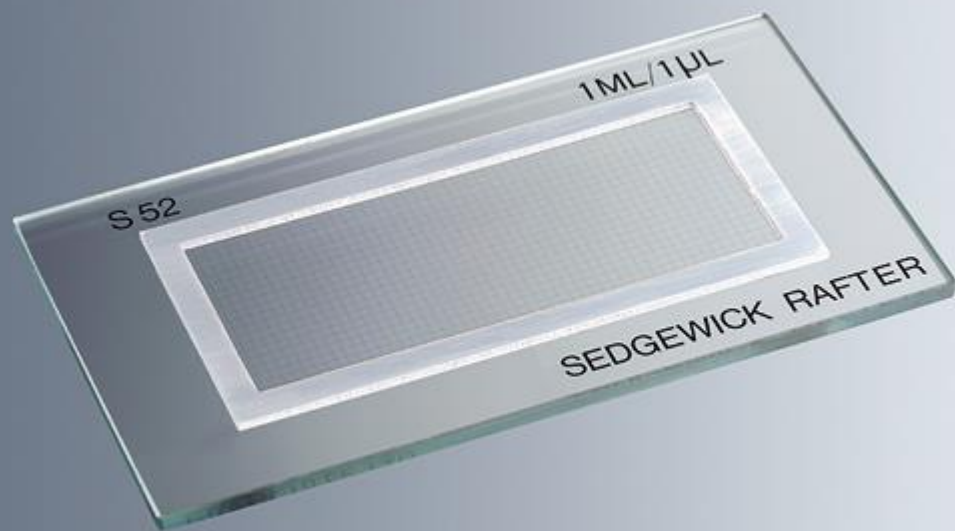
Zebra Mussel

- Native to Eastern Europe
- Found in Missouri River and Offutt Base Lake
- Starves the food chain from the bottom-up
 - One adult can filter a liter of water per day
- First brought to the US in Ballast Water from Ships
- Larvae are microscopic and can stay viable for several days in water
- Can reach over 100,000 per square meter
- Female can produce over 1 million eggs per year



Glen Black





NGPC AIS Program

- Inspect watercraft statewide from May through September
 - Technicians located around the State
 - Last year: record 6,627 watercraft inspected
- Zebra Mussel water samples taken monthly
 - ~45 public waterbodies
 - Analyzed in-house at NGPC HQ
- Conduct outreach events and distribute materials
- Sampling for invasive aquatic weeds



- May 8th: NGPC AIS staff collected water samples from Beaver Lake after NGPC was notified by Beaver Lake officials that a suspect adult Zebra Mussel was found on a private boat lift
 - Samples negative
 - May 31st: NGPC repeated water sampling and detected veligers June 12th: Zebra Mussel veliger presence was confirmed by MFWP
- June 14th: Additional water samples were collected by NGPC staff. Veliger presence was confirmed by both NGPC and MFWP
- Since: Multiple adult zebra mussels found

- All Zebra Mussel infestations are different
 - Depends on multiple environmental factors
- NGPC does not have jurisdiction over private waterbodies
- Beaver Lake itself will decide any management actions
- NGPC will help and assist the best we can

Contact Information

Kristopher Stahr
*Aquatic Invasive Species
Program Manager*

Email: ngpc.ais@nebraska.gov

Phone: 402-471-7602



Visit outdoornebraska.gov/aquaticinvasivespecies for more information on AIS

Visit stopaquaticitchhikers.org for more information on Clean, Drain, Dry protocols