

## President's Message

Beaver Lake Community,

As we jump into the heart of summer, I wanted to take a moment to provide another update from the Board of Directors and continue the commitment we made earlier this year to improve communication, transparency, and engagement across our community.

First and foremost, thank you.

Thank you to everyone who attended the Annual Meeting, participated in discussions, volunteered their time, asked tough questions, and most importantly, demonstrated their care and passion for Beaver Lake. Whether we always agree or not, one thing remains clear, our membership is passionate about this community, and that passion is what continues to move us forward.

I also want to officially welcome our newly elected and reelected board members. We appreciate your willingness to serve and dedicate your time to the lake. In the same breath, we extend a sincere thank you to Russ Parmer for his service, hard work, and continued commitment to Beaver Lake over the years.

As shared during the Annual Meeting, we continue moving forward throughout the community with some major initiatives. Some are highly visible, while others involve the less glamorous but necessary work of engineering, permitting, budgeting, coordination, and long-term planning.

One of the most visible projects currently underway is the Southwest Cove improvement project. We are pleased to report that work continues to progress, and if weather and construction conditions cooperate, the goal remains to have the project substantially completed and the roadway reopened prior to the start of the school year. We appreciate everyone's patience as we work through the temporary inconveniences associated with a project of this scale. In the long run, this investment is critical to the long-term health and stability of Beaver Lake infrastructure.

Another topic many residents have understandably been watching closely is weed management throughout the lake. The loaner weed harvester is operational and actively working, which is exciting to see after the many months of planning, approvals, logistics, and preparation that went into getting the program launched. Like any new operation, there has been a learning curve with equipment operations, routing, unloading coordination, and even battling mother nature and wind conditions that can quickly move vegetation across different areas of the lake. While not perfect, we are encouraged by early progress and excited to know the equipment is functioning as intended and will continue operating throughout the season as weather and lake conditions allow. We appreciate everyone's patience while staff and operators continue refining the process and maximizing effectiveness.

At the same time, many residents have asked about the dam and other long-term capital improvement projects. At this stage, a few of those larger infrastructure discussions remain tied to pending guidance and updates from FEMA. While that process can at times feel

(Continued on page 2)

slow and frustrating, the reality is that those decisions directly influence the timing, prioritization, funding strategy, and scope of several future projects across the lake, including discussions surrounding the pool and other critical infrastructure needs. The Board continues working closely with engineering partners and outside agencies to ensure we are positioned to make responsible long-term decisions as additional information becomes available.

We also understand there has been significant discussion surrounding the pool closure and maintenance concerns heading into the summer season. We fully recognize the importance of the pool to many families within the community and understand the disappointment and frustration that comes with these challenges. While short-term operational repairs continue, the Board is also trying to balance those conversations alongside the larger long-term infrastructure planning currently underway. We appreciate everyone's patience as we work through these items responsibly and transparently.

Security and safety also remain front and center. Over the last several months, the Board, staff, and local law enforcement partners have continued meeting through the LEO Roundtable discussions to review current policies, improve consistency, and identify opportunities to strengthen communication and response procedures throughout the community. Additional discussions involving recreational vehicles, e-bikes, and related safety concerns are also underway as we work toward clearer structure and expectations for everyone.

One thing I continue to remind myself of is this: communities are not strengthened during calm waters alone. They are strengthened during moments of challenge, disagreement, and change. And with this reminder, I want to challenge our community to stay engaged, stay respectful, and continue rowing in the same direction even when the waters get a little rough for the betterment of all.

That doesn't mean we will always move as fast as everyone would like, and it certainly doesn't mean we will always get every decision perfect. But I can assure you this Board is engaged, working hard, and committed to making decisions with the long-term future of Beaver Lake in mind.

As always, we encourage residents to attend meetings, participate in committees, ask questions, and continue sharing feedback in a constructive manner. Communication remains one of our biggest priorities, and we also encourage everyone to regularly utilize the Beaver Lake Website as the Association's primary source of information and updates. The website works in harmony with our text notification system to provide timely alerts and important community notifications when immediate communication is needed.

Thank you again for your continued support, patience, and passion for Beaver Lake. Summer is here, and despite the occasional headwinds, there is still plenty ahead to look forward to as a community.

Respectfully,  
Mike Langford  
President  
Beaver Lake Association



## Beaver Lake Ladies' Auxiliary

By the time this article is published, the Auxiliary annual garage sale will be said and done. At last report, pre-donations were piling up and it's looking like we'll have lots of merchandise available. We are thankful both for those donations as well as the customers who always make this sale a big success.



In March, we held our first ever Wine Tasting event. We sold 94 tickets and we felt the night went very well and will consider making it an annual event. Money raised from ticket sales and our share of wine sold went to our scholarship fund and our lake purchases' fund.

In April, with Troy's help, we developed a list of items to be purchased for lake needs. We are considering a diaper changing station for the upstairs women's restroom in the clubhouse, more tables for the clubhouse, sports equipment to be available to be checked out through the snack shack, and 3 outdoor benches.

In May, we announced the 2 winners of our \$500 scholarships. They are Kiersten Jensen and Grant Tesarek. Evan Murrical is the alternate. Congratulations again to these 3. The Long Range Planning committee reported that new lounge chairs for the pool area have been purchased as well as sports items, basketballs, volleyballs, etc, to be available to beach goers through Coconuts. Also, a diaper changing table has been ordered. Outdoor benches are being shopped for and discussion is being held on the new tables for the clubhouse. Once again, we are so grateful to everyone who has participated in our projects that have made the purchase of these items possible.

### Future events:

- Annual Craft Fair - October 3<sup>rd</sup>
- Annual Christmas party - December 7th.

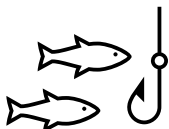
### Next meetings:

- August 3<sup>rd</sup> at 1:00 at the clubhouse
- September 7<sup>th</sup> - pot luck and lake cruise
- November 2<sup>nd</sup> - 1:00 at the clubhouse.

In June and July, we won't formally meet but will have some outings as a group. In March, several members went to a movie and lunch together, and in April, a group attended a Spanish themed dinner at Slattery's.

Have a great summer, everyone!! – Beaver Lake Ladies' Auxiliary

## Fishing Club Kids Fishing Derby



The Fishing Club's **Annual Kids Fishing Derby**. **The Derby is on June 13th** this year. It is open to all children 12 and under and their parents. This event is open to all children, you don't have to be a Beaver Lake resident to participate. Contact the Fishing Club with any questions. Hope to see you there!

## BLA Annual Election Results



### Board Member Results:

134 Sandy Battreall

165 Cathy Brink

170 Adam Tabor

- All three elected

### Votes were cast as follows:

154 Electronic Proxy Ballots Counted

42 Walk-In Ballots Counted

196 Total Proxies + Walk-Ins

- 2 ballots invalid

## Beaver Lake Blvd Partial Closure – SW Cove Area

Attention Please! Beginning on Monday June 1, 2026, Beaver Lake Blvd will be closed from Fire Lane to Carol Court. in the Southwest Cove area. This is due to the replacement of the culverts under Beaver Lake Blvd. No traffic will be allowed through that area of the Blvd. Any traffic for the area will need to reroute to Hwy 75 to get to the north end of the Blvd from the south side of the lake. The road closure will last for approximately 3 months and is weather dependent. We ask that you please plan accordingly and advise any guests or workers coming to your area to avoid any traffic problems.

Please look at the attached map to view the closure area. We will contact the following companies to make them aware of the road closure as well; Murray Fire and Rescue, Conestoga High School transportation, Papillion Sanitation, and Postal Services.

We appreciate everybody's cooperation during this timeframe while we improve the infrastructure of Beaver Lake.

See map of closure on the Beaver Lake Website: [SW Cove Road Closure Map](#)

Troy Weatherby, Managing Director  
Beaver Lake Association

**TextMyGov**<sup>®</sup>

## Subscribe to BLA Text Messages

You can sign up to get text alerts from the Beaver Lake Association from your cell phone. Please read the terms and conditions for our texting service by clicking here: [TextMyGov Terms and Conditions](#). Opt-in through this link: [Sign Up](#).

If you received our first text message on 1-20-26 or have received one from BLA since, then you are already signed up! Opt-out by texting "STOP" to 91896.

## Important Patrol Information

### Reminder:

ALL Boat Stickers, GAU's and Pet Licenses must be renewed **by May 1, 2026!**

Boat Stickers, Ramp Cards, & GAU Stickers can be obtained from the Boat Ramp during regular boat ramp hours\*.

<b>Regular Boat Ramp Hours:</b>	Sunday to Friday	Noon – 5pm
	Saturday	9am – 5pm

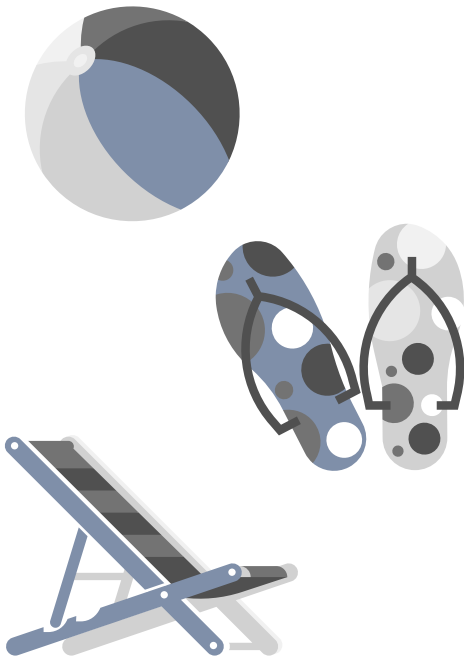
*\*It must be above 50 degrees and not raining to sticker any vessel.*

Contact Lake Patrol with any questions. 402-235-2241 or [security@beaverlakene.org](mailto:security@beaverlakene.org)

[Online Boat Registration Page](#)

[Online GAU Form Page](#)

[Online Pet License Form Page](#)



**SUMMER SWIM CAMP**  
Swim lessons, water safety classes, and fun!

**\$40 per week**  
Limited spots!

CLASSES ARE 45 MIN.

June 15 - 19  
June 29 - July 3  
July 6 - 10  
9 am or 10 am

**NEW! TINY TOTS!**  
July 6 - 10  
6 pm - 8 pm Ages 3 and under only!  
w/PARENT/GRANDPARENT

Register now!  
Questions? Ask Roba  
402.235.2243

## Swimming Pool Update

Due to repairs being made to the bottom of the swimming pool, the Beaver Lake Swimming Pool will not be opening for the Memorial Day weekend. The pool has aged to the point where there are various issues that occur with it over the winter and into spring. We will continue to execute our plan to repair the pool as quickly as possible. This will take some time, and we hope to have it open by mid-June. We ask for your patience during this time of repair so we may focus on the issues at hand. Meanwhile please enjoy the lake and beach to start off your summer season.

Thank you.

Troy Weatherby, Managing Director  
Beaver Lake Association

## 2026 Lawn Watering Restrictions

Originally effective April 1, 2025, and still being enforced, all Beaver Lake Properties are under lawn watering restrictions due to the lake level being down as we move into spring. Lawn watering restrictions are enacted by the Board of Directors when the lake level is down 12" or more. Currently we are 12" low. You can see the current lake level and temperature by going to the link on the front page of the [Beaver Lake website](#). The lawn watering restrictions work as follows. If your address ends in an **even** number, you may water your lawn on **Monday, Wednesday and Friday** each week. If your address ends in an **odd** number, you may water on **Tuesday, Thursday, and Saturday** of each week. Please limit your watering timeframe to morning and evenings to avoid evaporation. These restrictions apply whether you pull water directly from the lake or use water from the distribution system. As conditions change, we will put updates on Website for your use. These water rationing guidelines are also on page 86 of the Beaver Lake Handbook. We ask that you respectfully follow these guidelines to ensure that all property owners have the chance to water vegetation as well as maintain the level of our drinking water source. If the regulations are violated, Beaver Lake personnel have the authority to issue a violation of the Handbook rules. Rule 401 of the liquidated damages schedule provides that a \$50 fine may be imposed for a violation of Emergency water regulations. Please set or control your lawn watering schedule effective immediately. We appreciate your cooperation on this matter.

Troy Weatherby  
BLA Managing Director

### WATERING DAYS UNDER RESTRICTIONS

SUN	MON	TUE	WED	THUR
15	13		4	13

**Please water only on assigned days to conserve our precious resources.**

**Address ends on even number = Mon/Wed/Fri.**

**Address ends on odd number = Tues/Thurs/Sat**

## Join us at the Coconuts Soon



Join us for a snack at the Coconuts this summer!

Hours are Noon to 7:00pm, 7 days per week, weather permitting.

(It must be above 70 degrees, not raining, etc.)

You know there's nothing like a Coconuts cheeseburger or an ice cream treat!

We look forward to seeing you this summer!

## Beaver Lake's 2025 Water Quality Report Posted

Check out the Forms Section (under Information) on the BLA Website to see the [2025 Water Quality Report](#)

## Calendar Reservations

Property owners can make **2026** reservations for the campground, pool, three pavilions and Clubhouse. You can also make 2027 Clubhouse reservations.

## New Property Owners

- Check out the Beaver Lake Website! There is a plethora of useful information.
- You can also stop by the Beaver Lake Office for a Welcome Packet.
- Sign up for Beaver Lake text messages on the front page of the Website so you can read the monthly newsletter and be notified of emergencies.
- We'd love to have you fill out a [Membership Info Form](#) if you haven't already!



## BLA Website:

[www.beaverlakene.org](http://www.beaverlakene.org)

The BLA Website is your home for all official Beaver Lake News, Calendar info, Advertising, Handbook, Documents, Board & Committee minutes, Information and Online Payments.

Make sure to check it regularly and see what you find!

## Online Payments

Don't forget you can pay your Beaver Lake bills online by clicking [Pay Online](#) from the main menu of the website! Call the office if you have questions.

## Backflow Prevention

See next two pages for our annual backflow prevention information.

## A HOMEOWNER'S GUIDE

### Common Backflow Preventers and Their Uses



#### REDUCED PRESSURE PRINCIPLE BACKFLOW PREVENTER

These assemblies are used in situations where a high hazard exists, and an air gap cannot be used.

This can occur when water pressure is required beyond the point of protection. In this case, an air gap would not likely work well as water pressure can only occur beyond the air gap if a pump is installed to place the water back under pressure. These assemblies are not common in homes; although homes that are heated with boilers connected to the public water supply system will likely need one of these installed on the boiler feed line. As with the other assemblies, a reduced pressure principal backflow preventer will have to be tested on an annual basis by a licensed backflow tester to insure it is operating properly.



#### SURVEY YOUR RESIDENCE

Homeowners should inspect their plumbing to determine if they have any of these devices or assemblies installed. If you do not have hose bibs with built-in protection or hose bib vacuum breakers installed, you can purchase these from your local hardware store or plumber and install them yourself. If you find one of the testable backflow preventers on your property, you should check with your water provider to determine if you need to have it tested on a routine basis, or if there is any regular maintenance that needs to be performed. Preventing backflow is the responsibility of all customers of the water system, and the safe water that results from installing proper protection benefits everyone.

Published by:  
Nebraska Rural Water Association (6/13)

**B**ackflow prevention is necessary to insure that the water we get from our faucets and taps is safe to drink. There are many different ways to prevent backflow from occurring, and this brochure will introduce you to some of these methods, devices and assemblies, and point out where they might be found and why they are there.

**AIR GAP**

Air gaps are the most common means of protecting against backflow, and they are also the best protection. An air gap is simply a physical break between the source of the water and the container into which it is running. Air gaps are built in to most sinks found in residences. Kitchen and bathroom sinks, as well as, bathtubs, showers, washing machines and dish washers are designed with an air gap to protect the water supply. Placing a hose on the end of these faucets will render the air gap useless and could allow the contents of the sink to be drawn back into the water supply. Water bed filler kits and old fashioned spray hoses that fit over the faucet are common ways of bypassing an air gap. These should be avoided at all costs.



**HOSE BIB VACUUM BREAKERS**

Most houses have hose bibs installed on them so that the owner can use a garden hose to water the lawn and gardens, or use it to wash the car or do other chores that require water. Newer hose bibs are constructed with a built-in vacuum breaker to prevent backflow, but many older homes do not have this type of outside faucet. These older faucets need to be protected with a hose-bib



vacuum breaker which can be screwed onto the hose bib, and the hose is then attached to the vacuum breaker. These vacuum breakers need to be left on the hose bib to prevent back-siphonage occurring in the event of a loss of water pressure. The contents of any container the end of the hose is in could be siphoned back into the water system if this vacuum breaker is removed. No one wants to drink the contents of a baby pool, a hot tub or the bucket of suds used to wash the car.

**PRESSURE VACUUM BREAKERS**

Pressure vacuum breakers are the newest testable backflow preventers available. These testable backflow preventers are primarily found on underground sprinkler systems to protect against backsiphonage. There are many different manufacturers of pressure vacuum breakers, and some of them may look a little different than this picture, but they all function pretty much the same way. There is a check valve inside of the assembly that has a spring keeping it



closed so no water can pass back through the assembly if the supply pressure drops for any reason. There is also a spring in the top of the assembly that will open an inlet valve which allows air into the system to break the siphon affect and allow the water downstream to flow out of the piping. These devices are very good at preventing backflow on sprinkler systems, but they are not currently required by state law. Many water systems have adopted regulations requiring all underground sprinkler systems to be protected by pressure vacuum breakers, and many of these systems also require them to be tested on a routine basis to insure that they are operating properly. Homeowners should check with their local water supplier

to determine whether these are required to be installed and/or tested. It should be noted that this protection is in the best interest of every homeowner as any contamination pooled around a sprinkler head, such as pesticides, herbicides or animal waste could be siphoned into their water pipes anytime there is a loss of pressure. This loss of pressure could be from the water supplier or due to plumbing repairs within the home itself.

**DUAL CHECK VALVES**

Some communities use dual check valves on residential services to help prevent backflow from unprotected cross connections in the customer's plumbing. These devices are not accepted by the state as a part of a cross connection control program due to their limited use, but where they are installed, homeowners must take steps to limit the damage that can be caused by thermal expansion. If you have a device like this in your home, contact your water supplier to determine what steps you may have to take.



**DOUBLE CHECK VALVES**

Double check valves are good protection for low hazards, which are not harmful to human health. Breweries, vineyards and food services are examples of low hazards. Since most inside uses of water in homes are protected with built-in air gaps, these assemblies are seldom found in residential buildings, but where they are installed, they must be tested annually by a grade 6 licensed tester to insure they are functioning properly.



are not harmful to human health. Breweries, vineyards and food services are examples of low hazards. Since most inside uses of water in homes are protected with built-in air gaps, these assemblies are seldom found in residential buildings, but where they are installed, they must be tested annually by a grade 6 licensed tester to insure they are functioning properly.